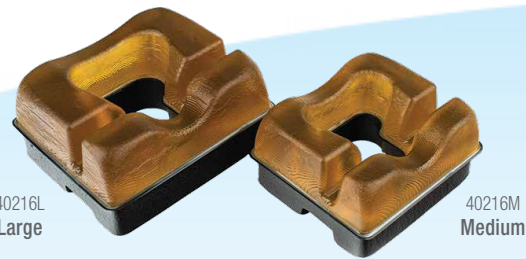


# ACTION<sup>®</sup> PRONE POSITIONING PRODUCTS

Our reusable products are engineered to help preserve skin integrity and sustain clinically necessary positions such as prone. **Pressure injury protection, from head to heels.**

## Head Positioners & Overlays



### Prone Headrests

Our popular Prone Headrest is designed to support the patient's head in a straight, neutral position during prone procedures. Sculpted central cutout is designed to avoid pressure around eyes, nose, and face. Soft, Akton<sup>®</sup> polymer surface helps reduce shear at the forehead and chin support area. Channels present in top and base of pad provide tube access for the anesthesiologist.

<b>40216M</b>	Medium	8 ¾ L x 7 ¾ W x 4 ¾ H	22.2 x 19.7 x 12 cm
<b>40216L</b>	Large	10 ½ L x 9 W x 5 ¼ H	27 x 22.9 x 14 cm

### Overlays

The Action<sup>®</sup> O.R. Overlay is a versatile pad used for a wide range of procedures.

<b>40105</b>	Small	20 L x 20 W x ½ H"	50.8 x 50.8 x 1.3 cm
<b>40100</b>	Medium	46 L x 20 W x ½ H"	117 x 50 x 1.3 cm
<b>40109</b>	Medium Large	63 L x 20 W x ½ H"	160 x 50 x 1.3 cm
<b>40101</b>	Full Length	72 L x 20 W x ½ H"	183 x 50 x 1.3 cm
<b>40103</b>	Perineal Cutout	46 L x 20 W x ½ H" w/ cutout	117 x 50.8 x 1.3 cm w/ cutout
<b>40104</b>	3-piece Set	See A, B and C	
<b>40104A</b>	Head	9 L x 20 W x ½ H"	22.9 x 50.8 x 1.3 cm
<b>40104B</b>	Torso w/ perineal cutout	39 ½ L x 20 W x ½ H"	100.3 x 50.8 x 1.3 cm
<b>40104C</b>	Foot w/ perineal cutout	20 L x 20 W x ½ H"	50.8 x 50.8 x 1.3 cm

## Arm Positioners



Shown with Stabilizer Strap



### Contoured Armboard Pads

The contoured armboard design cradles patient's arm while providing full-arm protection of the bicep, elbow, and forearm. Gently raised sides to help keep arm securely positioned.

<b>40307</b>	Small	16 L x 5 ¾ W x 2 ¼ H"	40.64 x 14.61 x 5.72 cm
<b>40310</b>	Medium	20 L x 5 ¾ W x 2 ¼ H"	50.8 x 14.6 x 5.72 cm
<b>40306</b>	Large	24 L x 5 ¾ W x 2 ¼ H"	60.96 x 14.6 x 5.72 cm

3/4" Deep Middle Channel



Shown with Stabilizer Strap

### Armboard Pads & Stabilizer Straps



For use on standard armboard table extensions to protect the patient's bicep, elbow and forearm areas. The reusable Stabilizer Strap features a soft polymer section to protect patient's skin while stabilizing arm/ hand.

<b>40300</b>	Short	15 L x 4 W x ¼ H"	38.1 x 10.16 x .64 cm
<b>40301</b>	Long	24 L x 4 W x ¾ H"	60.96 x 10.16 x .95 cm
<b>40309</b>	Wide Short	15 L x 6 ½ W x ¼ H"	38.1 x 16.51 x .64 cm
<b>40308</b>	Wide Long	24 L x 6 ½ W x ¾ H"	60.96 x 16.51 x .95 cm
<b>40315</b>	Short Strap	25 L x 2 W x ¼ H"	63.5 x 5.08 x .64 cm
<b>40317</b>	Long Strap	36 L x 2 W x ¼ H"	91.44 x 5.08 x .64 cm



Action Products, Inc.

800.228.7763 • 301.797.1414 • Fax 877.733.2073  
www.actionproducts.com • service@actionproducts.com

ACTION and AKTON are registered trademarks of Action Products, Inc. © 2024 Action Products, Inc.

ACTION products feature our proprietary Akton<sup>®</sup> polymer



**Patient protection for the following procedures:**

- Achilles Tendon Repair
- Hemorrhoidectomy
- Lipoma Excision
- Lumbar Laminectomy
- Posterior Cervical Fusion
- Posterior Varicose Vein Avulsion
- Repair of Haglund's Deformity
- Suction Assisted Lipectomy of Buttocks



**Body Positioners**



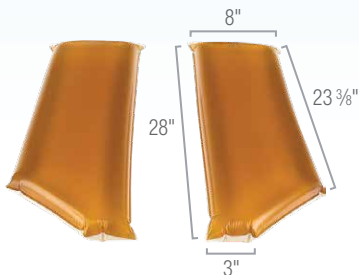
Adult		
<b>40616</b>	12 ½ L x 4 ¾ W x 3 ¾" H	31.75 x 11.11 x 8.57 cm
<b>40617</b>	16 ½ L x 4 ¾ W x 3 ¾" H	41.91 x 11.11 x 8.57 cm
<b>40618</b>	20 ½ L x 4 ¾ W x 3 ¾" H	52.07 x 11.11 x 8.57 cm
<b>40619</b>	12 L x 6 W x 5" H	30.48 x 15.24 x 12.7 cm
<b>40620</b>	16 L x 6 W x 5" H	40.64 x 15.24 x 12.7 cm
<b>40621</b>	20 L x 6 W x 5" H	50.8 x 15.24 x 12.7 cm

**Chest Rolls**

This line of flat bottom chest rolls is designed to provide stable support in the prone position. They are available in a wide range of heights and lengths to accommodate virtually any patient, adult to neonate.



Pediatric		
<b>40639</b>	6 L x 2 W x 2 H"	15.24 x 5.08 x 5.08 cm
<b>40640</b>	8 L x 2 W x 2 H"	20.32 x 5.08 x 5.08 cm
<b>40641</b>	10 L x 2 W x 2 H"	25.4 x 5.08 x 5.08 cm
<b>40642</b>	12 L x 2 W x 2 H"	30.48 x 5.08 x 5.08 cm
<b>40643</b>	6 L x 3 W x 3 H"	15.24 x 7.62 x 7.62cm
<b>40644</b>	8 L x 3 W x 3 H"	20.32 x 7.62 x 7.62cm
<b>40645</b>	10 L x 3 W x 3 H"	25.4 x 7.62 x 7.62cm
<b>40646</b>	12 L x 3 W x 3 H"	30.48 x 7.62 x 7.62cm



*Shown with Heel Support and Overlay*

**Chest Positioners**

These positioners have a contoured design patterned to uniformly conform to a patient's shoulder to chest area, with shaped edges for the axilla. They provide upper body positioning while alleviating pressure on the thorax area.

<b>40625</b>	Left	28 L x 23 ¾ L x 8 x 3 x 2 ½ H"	71.1 L x 59.4 L x 20.3 x 7.6 x 6.4 H cm
<b>40626</b>	Right	28 L x 23 ¾ L x 8 x 3 x 2 ½ H"	71.1 L x 59.4 L x 20.3 x 7.6 x 6.4 H cm

**Dome-Shaped Positioners**

Semi-circular design with flat bottom configuration provides pressure protection under the knees while the patient is in a supine position.

Helps to protect patient against foot drop for patients in prone position. Can be used under the metatarsal or under the foot, against the board, or in the semi-Fowler position.

<b>40603</b>	14 L x 6 W x 3 H"	36 x 15 x 7.6 cm
<b>40603L</b>	20 L x 6 W x 3 H"	50.8 x 15 x 7.6 cm

▶ See our Specialty Frame Product Sheet for our Kambin and Wilson pads.

